

Table of contents ...

Quick install	1
How to setup a cutter ?	6
How to enhance your cutting quality	7
My "First work"	9
How to delete registry key	12
How to reach logos ?	13
How to reach the logos store ?	14
How to purchase logos ?	15
How to search a logo ?	17
How to use FontsFinder ?	19
How to create a file in Adobe Illustrator ?	23
How to import a file ?	24
How to convert an image?	25
Automatic black and white conversion	25
Manual conversion	27
Automatic color conversion	28
Where to find HELP	30
How to restore the text parameters after rotation	31
How to write vertical text	31
I can not see my drawing in the control panel	31
How to Place Text on a Path	32
How to Place Text on a Circle	32
How to correct weird letter	33

QUICK INSTALL GUIDE - WinPCSIGN Letter 2005K, Basic 14e, Plus 14e

- 1) Be sure to close all open programs and insert the CD-ROM program into the CD-ROM or DVD drive. If the autorun is active you will see the following screen. If you wish to install WinPCSIGN program click the INSTALL button.

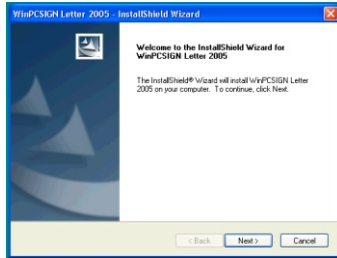


- 2) The following screen appears, click the button to begin installation and exit presentation.

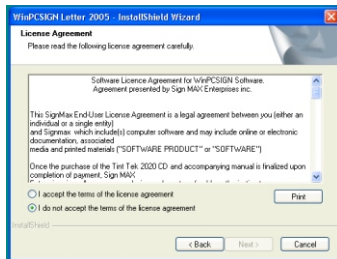


If it doesn't start, the autorun is deactivated, jump to page 5.

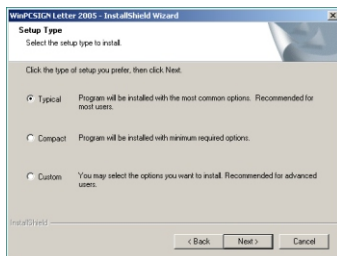
- 3 If the Setup.exe has been successfully selected, the following picture will be displayed. Click **Next** to continue



- 4 The installation program will show you our Software license. Please take the time to read this licence and click **"I accept"**. If you choose **"I do not accept"**, setup will close. To install WinPCSIGN program you must accept this agreement to continue and click Next



- 5 A full installation requires 315 meg of space on your hard disk, a personalized installation asks for much less space. Click the type of wished installation.



Notes

WinPCSIGN Letter 2005K _____

WinPCSIGN Version Number : _____

Cutter's Model : RS 360C _____

RS 720C _____

RS 800C _____

RS 1120C _____

RS 1360C _____

Connection type : _____

Serial Com Port (Com1, Com2, etc..) _____

USB converter to Serial USB converter (Com1 to Com6) _____

Serial Com port used: Com1, Com2, Com3, Com4, Com5 _____

and Com6 _____

Sign Max website www.signmax.us _____

VIP Studio website www.vipstudio.com _____

Dealer information : _____

Questions

I keep getting an error message that says that the cutter cannot be initialized-check the configuration.

You have to configure your cutter in the configuration menu by using the serial port Com1 to Com6 and the USB cable supplied with the cutter, certain cables have an end for the computer and an end for the cutter. Using USB port you must install USB driver found on program CD.

Setting Plotter codes
Check the active plotter and the port selected.

I obtain ERROR FONT

You have to erase of the Win PCSIGN directory the file
" Document .sav ".
C:\Program Files \ SignMAX \ WinPCSIGN Basic 14E

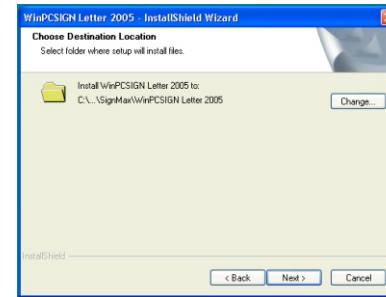
This can be taken from their web page, the edges are not straight and I can not see the drawing in the cutting window..

Karate Zoom 2X
Anti-aliasing

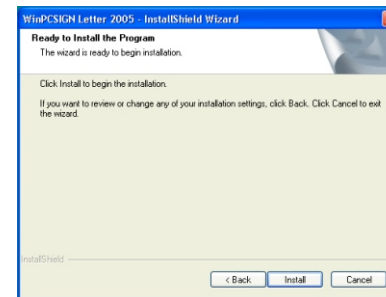
Images for Web are small and 96 or 72 dpi, they have no quality and must be digitized in the screen. Use fonts to reproduce them.

An image cannot be cut it does not contain vectors (lines, arcs or curves) it has to be vectorized or transformed into vectors. Save the image in BMP or JPG format to import in WinPCSIGN Basic

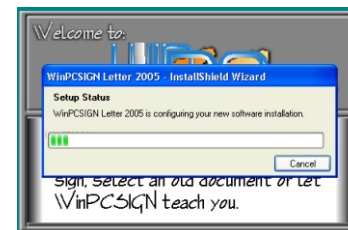
- 6 The installation program will suggest WinPCSIGN as a directory. To accept this directory click **Next**. If you want to install to a different directory, click **Change**.



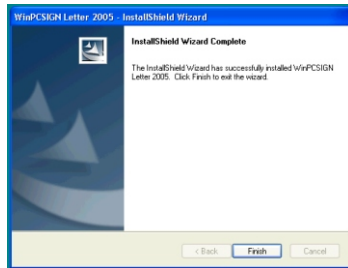
- 7 Click **Next** to continue.



- 8



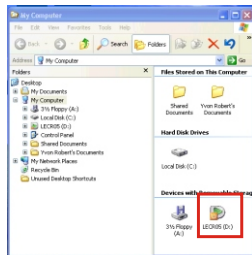
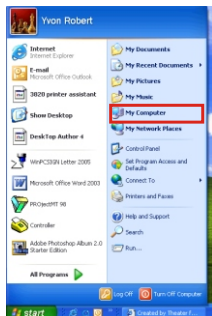
- 9 When the installation screen Complete, click Finish.



Congratulations, your installation is ended,
Continue on the page 5 “ To run your program” section 11

If it doesn't start, the autorun is deactivated, use one of the following 2 manners.

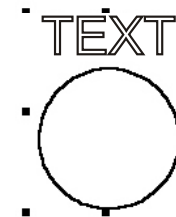
- A Insert the CD-Rom Program in the CD-Rom drive, double click on **My Computer** icon, then from this dialog box double click the CD-Rom icon.



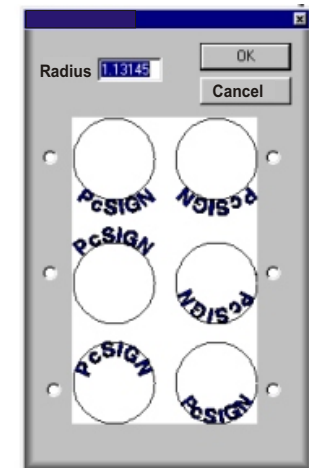
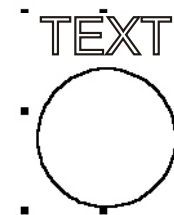
How to use function to fit a text on a circle ?.



- 1) Draw a circle by using the tool encircle, not confuse with the tool ellipse.
- 2) Type your text and to adjust height and length
- 3) Select the text and the circle.



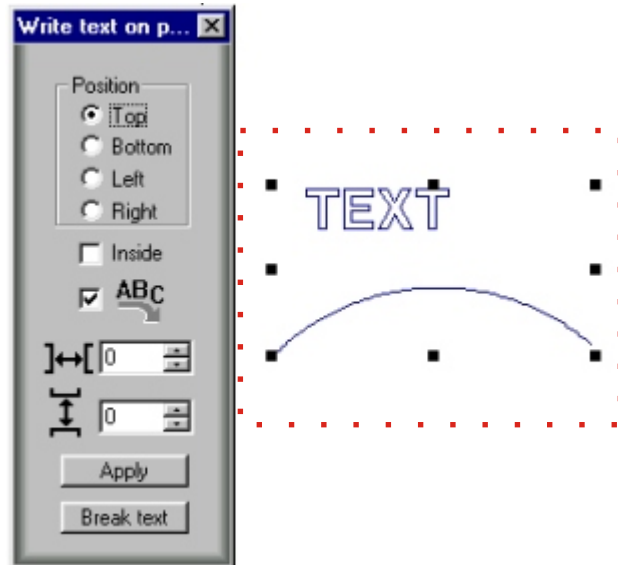
From the menu text use function place a text on a circle.



Adjust the circle radius, and choose the position of the text on the circle, click the button OK

How to Place Text on a Path?

From the Text Menu use function Place Text on a Path after selecting both the text and the path.



How to correct weird letter ?



The blade offset value is set wrong. See page 7

Start

MyComputer



Double click on your CD or DVD drive.

This action is going to start the presentation, to continue now installation.

OR

B Your WinPCSIGN program CD-Rom must be in your CD or DVD drive.

- Click on **Start** in the toolbar and choose **Run**
Type **d:\Program\Setup** in the dialog box and press Return.

The **D:** drive is where your CD-ROM is located. If, however, the letter for your CD-ROM drive is not **D**, type in the appropriate letter. Follow on-screen instructions to finish installation, accept default.

Before to run the program:

- 1 To run the program and use a serial connection you need one free USB port on your computer to install the security key (dongle). To use a USB serial adapter you need a second free USB port.
 - 1) Proceed to the installation of the **WinPCSIGN** software
 - 2) Install the USB key see step 2
 - 3) If you use an adapter, install the adapter driver normally it is on CD-ROM supplied with the adapter, restart your computer and install adapter on available USB port, Windows detect a new hardware and finish the installation.

2 Security key installation (dongle).

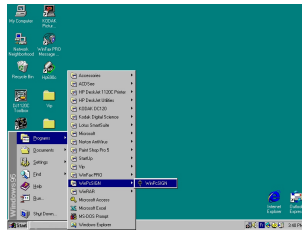


You can install anytime the security key, no driver to install or search, just place the security key (dongle) in a USB port. This can be done when you select USB key in software installation or anytime before running the program.

3 Run the program

To run the program click the WinPCSIGN icon on your desktop or use

Start / All Programs / WinPCSIGN

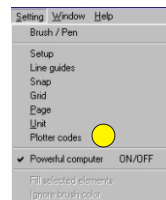


How to setup your cutter:

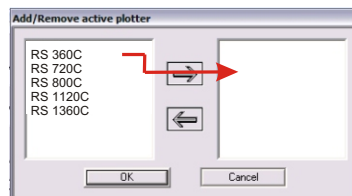
Before to set your cutter for WinPCSIGN, you will have to know what communications port will be used. Serial Com port and USB converter port USB converter use a serial port. (Com1 to Com6) and configured serial in WinPCSIGN.

Start button, Control Panel, double click the **System icon, Hardware Tab, Device Manager button**, find Ports (Com and LPT) click the plus square to expand the selection and note the port used with the USB adaptor driver. (Configure COMX in the software **not USB**)

Run the WinPCSIGN software and from the **Setting menu**, click on **Plotter Codes**



Then from the setup plotter window click on **Add/Remove**. Locate your plotter model, select it and click on the arrow



to place the plotter in the visualization windows to the right. Finally click **OK** and **Accept/Save**

Questions ?

How to restore the text parameters after rotation or writing on a circle or on a path.

From the Text Menu select Clear text transformation

How to write vertical text.

Use the Fast Writing function (CTRL T), in the box - type the first letter and press Enter, type the second letter and press Enter etc.... for the other letters. Justify in the centre. Choose height and click the button OK. You can change the font, the height and the spacing between letters by using visual text spacing or mathematical spacing between lines using text spacing.

I can not see my drawing in the cutting control panel or objects are missing.

If an object does not appear in the cutting control panel: the lines are white or you have an **image** - only vector objects are seen by the cutting control panel. To display a vector object containing white lines you can use wire frame function.

You can also right click on the object to see its properties. Check to see if the object is an image or a cuttable vector object.

In the cutting control panel images will not display and will not cut. You must convert them to vector objects in order to cut them.

Questions ?

Where to find help and training on the Win PCSIGN software.

Multimedia training on the blue CD-Rom. It contains more than 100 movies.

A complete WinPCSIGN software manual in PDF format on the CD-Rom.

An E-Book software manual on CD-Rom. It is accessible from the Start Menu. Programs, WinPCSIGN Letter, Tools

Paper booklet accompanying the software cd's.

The Help Menu in the WinPCSIGN software.

On the Internet at www.signmax.us & www.vipstudio.com

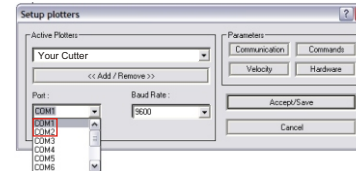
E-mail support signmax@signmax.us
Vip@vipstudio.com

How return the cutter head to the origin Or start point (0,0)

In the cutting control panel uncheck the box **Advance** after cut.

How to check vinyl alignment before cutting.

From cutting control panel, click the white vinyl align button. The vinyl cutter will unwind the quantity of necessary material and will return to the origin point

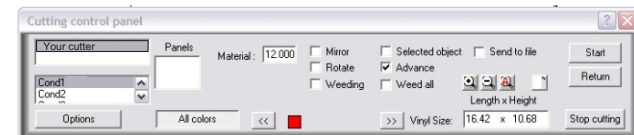


Use the Com port available previously identified in the Device Manager. If you use a USB serial converter check port in the Device Manager and configure with this port.

To test the equipment:

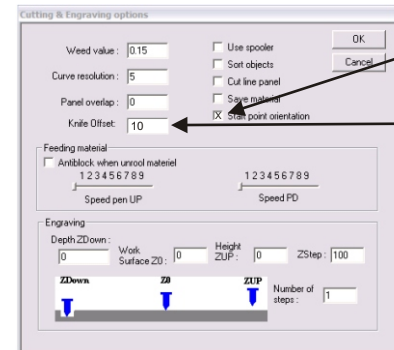
Draw a square or a rectangle on the working page.

Click on the cutter icon, this will open the **Cutting Control Panel** Press the **Start** button.



To enhance your cutting quality:

Click the **Options** button in the **Cutting Control Panel**
Enter a value 0.125 or 0.150 for the weed value
Also checkmark the box for Start Point Orientation.



Checkmark the blade orientation function.



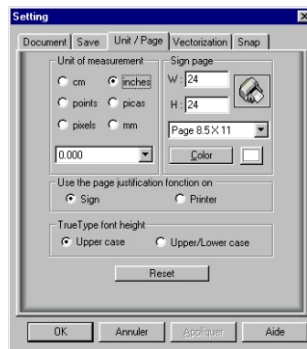
Click OK button and exit from Cutting Control Panel so that the changes take effect.

The blade offset function allows you to compensate for the slope of the edge of the blade. The advantage of choosing a good offset value is that letters have square corners and are easier to weed because the vinyl and adhesive will be totally cut.

My first work...

To begin a work click the icon Win PCSIGN Letter present on the Windows desktop. Click the button Win PCSIGN to begin, click the button Close of the screen Tip of the Day, you are in the working screen.

If you begin to define your working page and to choose metric or English unity. Any time you can change the dimension of your working page.



Two working modes :

To configure the working page according to the dimensions of the sign to be realized

To configure the working page according to the width of the vinyl used to avoid losses, to choose a arbitrary length page of 2 or 3 times the width of the vinyl.

Not to forget to choose unit of measure.

To write a text.

Click the icon T present in the tools bar to your left, move the mouse cursor on your working page and click.

Type the word **Hello**

By means of the mouse click the selection tool in the tools bar at your left, click the text which you typed.



Once the conversion is complete you will have a vector object that is ready for cutting. It may be necessary to correct some of the lines and arcs using the editing tools.

Automatic Color Vectorization. (Pro Edition Only)

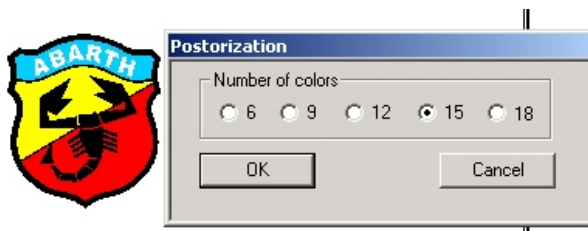
The color vectorization is the easiest to use.

When digitizing your image - use the scanners functions to enlarge the image as much as possible. The larger the image, the better the conversion will be.
You can scan in color at 256 colors, 8 bit, 16 bit, or 24 bit.

Parameters to use :

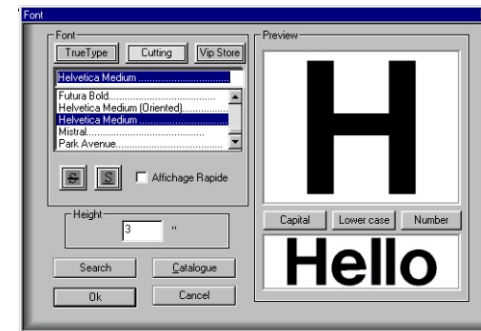
- Color drawing (Solid colors only)
- Enlarge the selected zone as much as possible
200 to 800 %
- Scan using 200 or 300 dpi

From the Bitmap Menu select Vectorization / Automatic Vectorization.



Use the Posterization Function to reduce the number of colors you have to work with. Using the magic wand - click on the scan image once. The conversion process will begin. It may take a few minutes depending on the complexity of the image.

To change the font or the height of the font, click the icon **F** at the top of your working screen.



Hello 3.000 inches

The height of the font is defined with the letter N capital letter of the alphabet. This menu allows to use the cutting fonts and the TrueTypes and Adobe fonts present in your computer. Furthermore it allows to change height.

Transformation Menu

Press the letter H of your keyboard and compare heights.



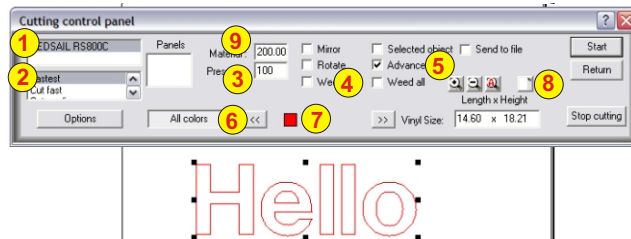
Hello

Transformation measure the box, round letters are bigger.

3.059 inches

The transformation tool measures the selected object, it is the measure of the box of the selected objects.

If your cutter is configured, you can cut now. For this prepare your cutter, power ON, vinyl and...
Click the blade icon which opens the cutting control panel

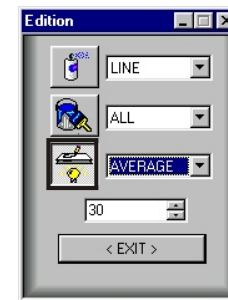
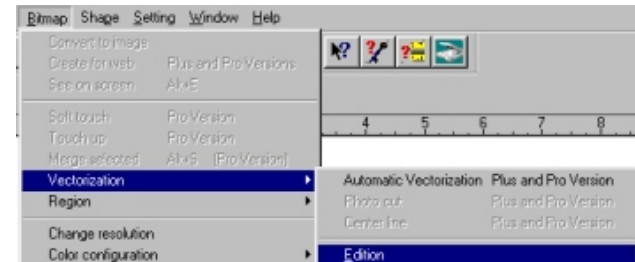


Allows to choose :

- 1 Cutter selection (if 2 or more available)
- 2 Cutting speed selection or pen speed**
- Configure the speed on the panel of the RedSail cutters.
- 3 Blade pressure if cutter has this function**
- Configure the pressure on the panel of the RedSail cutters.
- 4 Weeding box activated or not
- 5 Movement of the cutter head in the end or at the beginning of the vinyl
- 6 Allows to cut by selection of 1 or several objects
- 7 Allows to cut objects by the color of their outlines
- 8 Allows to verify the vinyl alignment.
- 9 Effective vinyl width.



Manual Vectorization (All Editions)



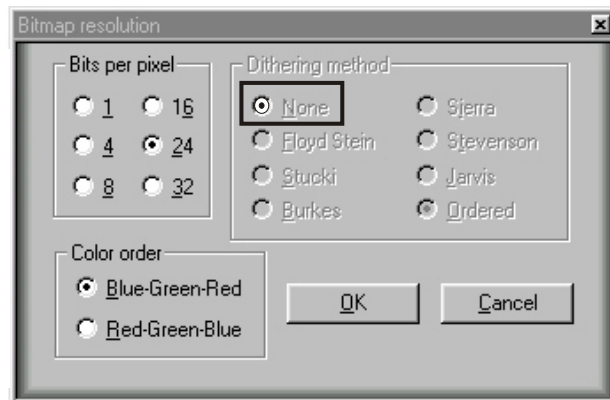
Use the magic wand and click each part of the image you wish to convert to a vectorized (cuttable) object. When your finished, select all vectorized objects and use the simplify paths function to help remove unwanted points.



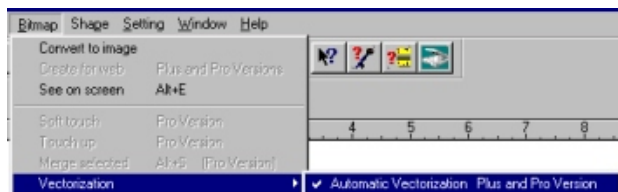
Using the simplify paths function a few times will help reduce the number of unwanted points making editing easier.

When finished you can edit or modify individual paths by using the drawing tools.

Change the resolution and to reduce gradually to 1 bit per pixel and set **Dithering Pattern to none**.



When you have a real 1 bit black and white image, use Bitmap, Vectorization, Automatic click on the image and the conversion process will start.

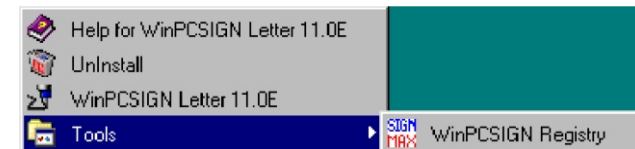


When the image is finished being converted to vector format you can edit or modify individual paths by using the drawing tools.

How to delete the Letter registry key

Removing a program is sometimes useless, unless you erase the registry keys. To reset the original settings use the regdelete utility.

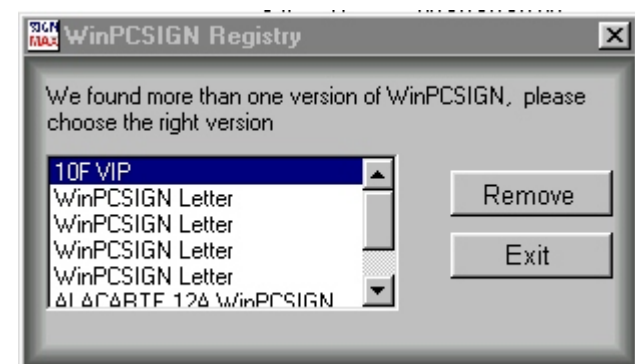
To use this utility program- Go to Start, Programs, WinPCSIGN Basic 14E, RegDelete



Attention: This program erases only the Letter register key and not the program.

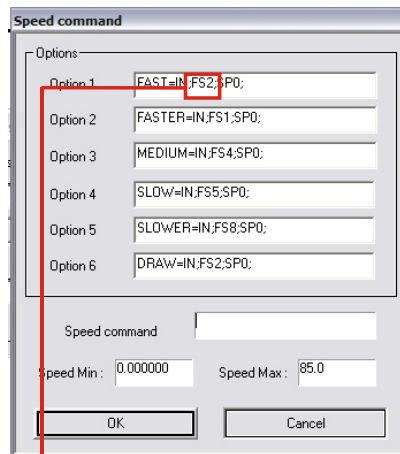
You can also use Windows Explorer and from C:/Programs Files/SignMAX/WinPCSIGN Basic 14E found RegDelete Program and double click on it. (Also on the original CD Program) **SIGN MAX RegDelete.exe**

Registry key removal program

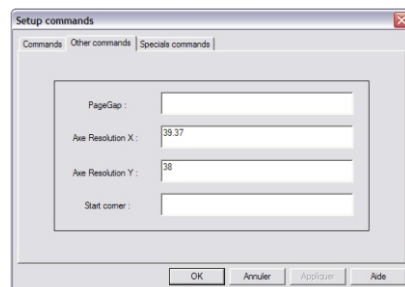


Changing speed parameters:(if cutter has these functions)

You can adapt to your requirements the speed categories by changing values FS1 to FS8. By clicking the button Velocity you access to this Speed command menu.



By modifying the factors of X axis and the Y axis you can calibrate the cutter. This factor 39,37 represent 1000 steps per inch. Use 2 decimals.



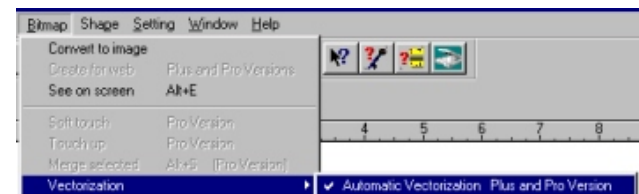
How to convert an image?

- Manual conversion
- Automatic B/W conversion
- Automatic color conversion

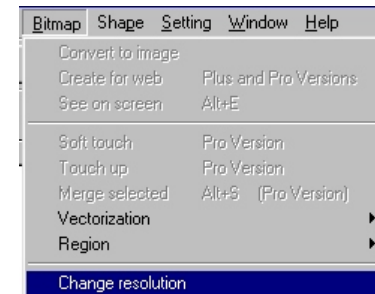
Digitize your image by using the scanner functions. The larger the image the better the conversion will be. You can digitize in black & white 1 bit per pixel, or digitize in color.

Parameters to use :

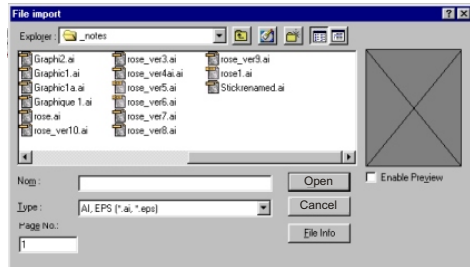
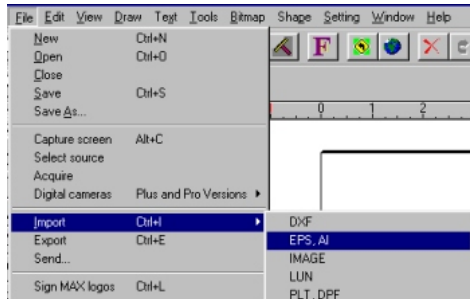
- Black/White drawing or color drawing (Solid colors only)
- Enlarge the selected zone as much as possible - 200 to 800 % works well.
- Digitize using 200 or 300 dpi



WinPCSign Letter Software has an automatic B/W conversion however image must be digitized in 1bit pixel (B/W) if you have an color image or a black & white image in 24 bits, you must use the function "Change Resolution" to reduce the image to 1 bit per pixel. Make sure you set *Dithering Pattern to None*



From Win PCSIGN import a file format AI or EPS by using function File import File (EPS,AI)



From the directory containing your file, select the file to be imported, if its in vector format, click Vector button. If its in raster(photos) format click bitmap



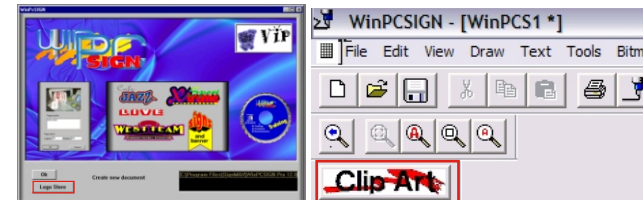
If round letters or circles seem segmented, from the *shape menu* use function *break all* and *redraw* the screen. This will restore the curvature of letters. If segments or lines are roamed use the *move point tool* and double to click objects to be corrected



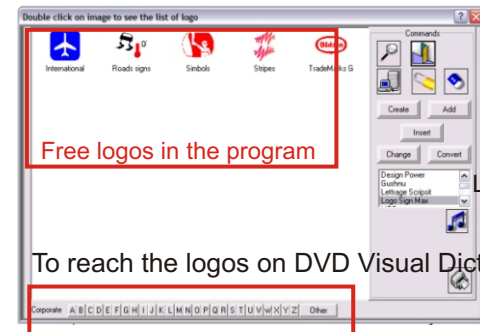
How to reach logos.



Two ways : The first screen by pressing the logos button or in the working screen by clicking the logo icon.



To see the available logos, use the down arrow and go to Signmax.



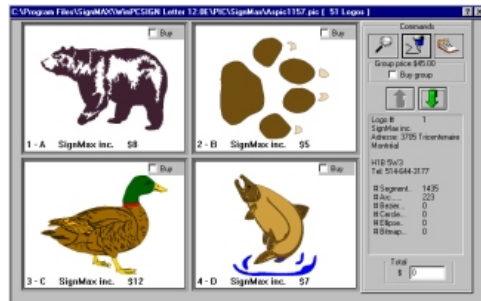
Logos Store

To reach the logos on DVD Visual Dictionary

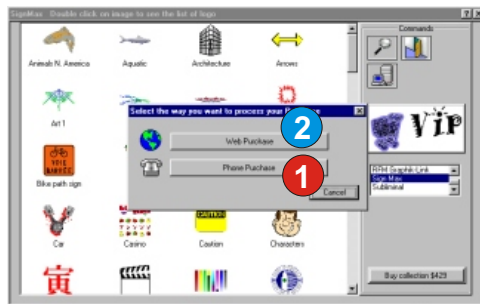
In the Sign Max store, click first icon at the top of the screen to see contents Animals of North America.



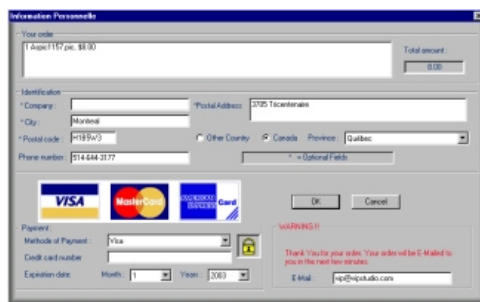
Contents of the file Animal North America



- 1 You have 3 ways to buy: using the Internet or by calling up directly to 514-644-5147 or using the Internet at www.signmax.us

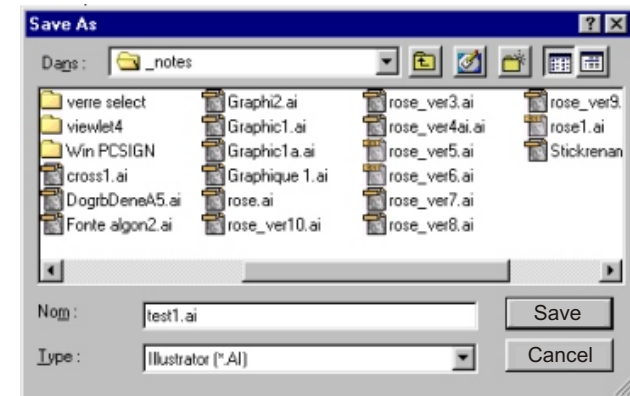


- 2 By using the Internet you will receive by E-mail your logos

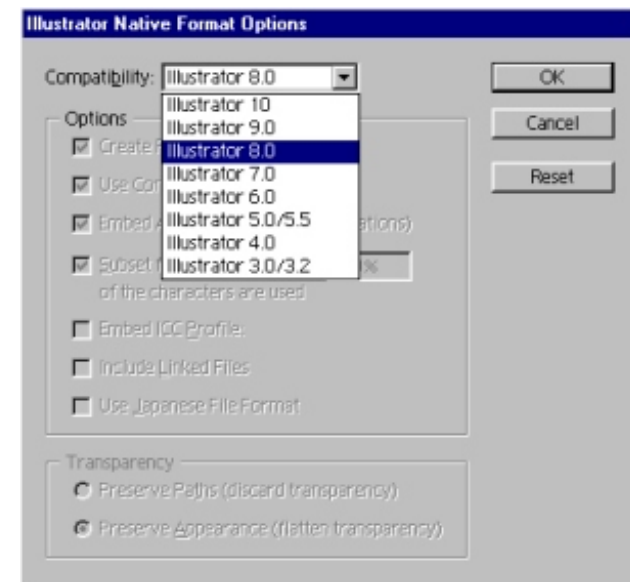


How to create a file in Adobe Illustrator and to import in Win PCSIGN Letter.

Save your Illustrator file using Save or Save as ...



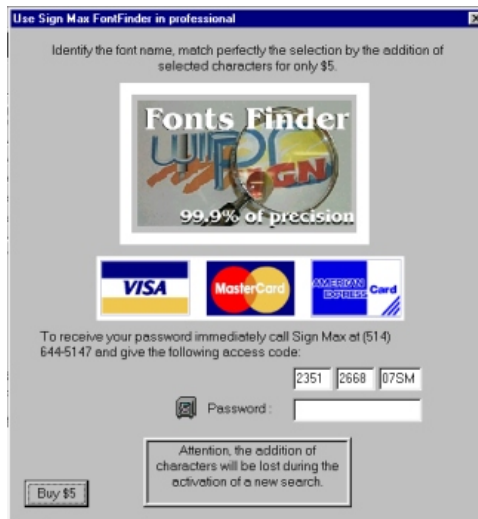
Save your file in Illustrator version 8 or less. If you save in version 9 or 10 uncheck the boxes creation of a compatible PDF file and do not use the compression file.



Or to buy the name of the font and to get it using Internet or through your authorized retailer



You can buy the font name or the Perfect Match characters.



Before calling up, have your credit card ready, give us the access code and we give to you the password, type it in and click the button BUY.



You have 3 choices to purchase :

- 1 - Use Internet to place your order and to receive your logos by Internet using your E-mail address.
- 2 - Call us directly at 1-514-644-5147
- 3 - Visit the site www.signmax.us
This allows to pay by credit card and immediately obtain the password to unlock the logos on your HD.
(24/7) Complete automated process and security

You can reach the Internet directly from your Letter software to purchase passwords for logos any time. You can also buy logos which are not present on your CD or hard disk.

- 3 Visit www.signmax.us to:
- Save on long distance phone charges
 - Day and night 24/7
 - Secure transactions
 - To obtain passwords to unlock logos on your CD or HD
 - To buy the other logos which are not present on your CD or your hard disk.



Macpherson

Perfect Match allows to extract up to 50 characters of the selected font

n

In black the original vectorized "n" letter, in red the "n" letter extracted with **Perfect Match**

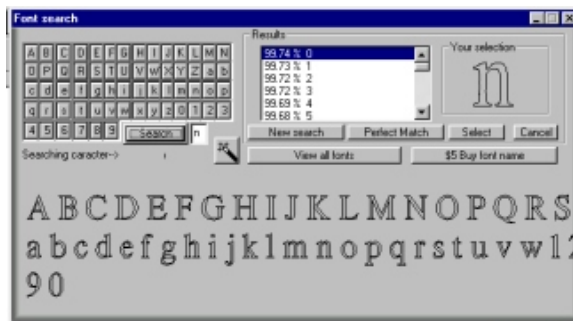
You can buy the font name or the Perfect Match characters.





- 4 FontsFinder found up to 20 fonts containing character “n” identical to the selected letter. Now you have 2 options:

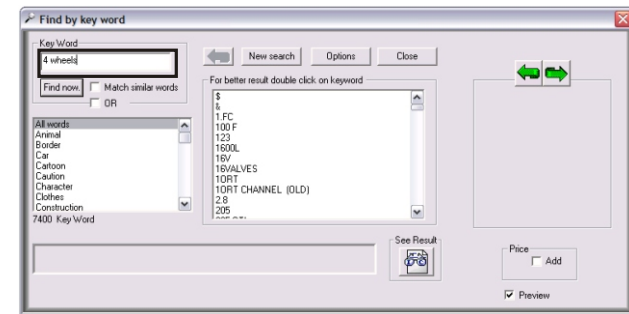
- 1) View the most likely font (higher percentage) or the most likely fonts
- 2) Select another character with the selection tool and continue search among fonts already found for a better match or a confirmation.



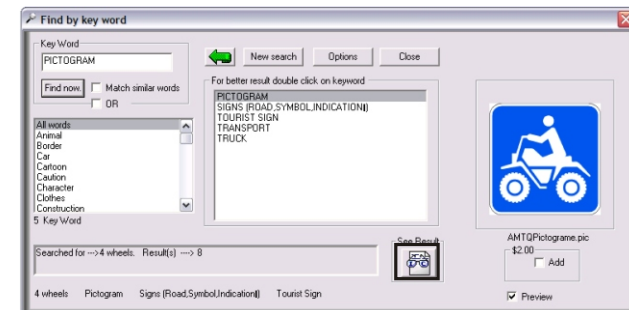
You can buy the font name or you can continue to select letters for a perfect match up to 50 selected font characters to replace vectorized characters. In the Pro version characters extraction is free and font identification (font name) is free.

How to search for a logo.

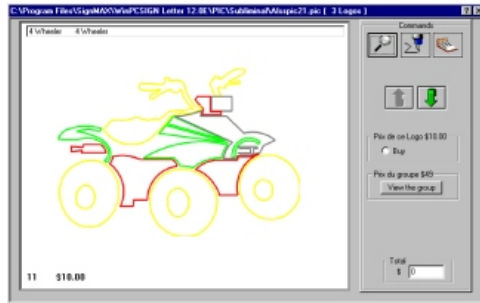
Click the logo search icon. This opens the search tool menu.



Type in a Key Word window. Example: 4 Wheels



Click the See Result button to view the found logos. If you wish to buy click the BUY button.



How to use FontsFinder.

- 1 Scan a business card or a document so the final height lettering is 2 inches in height (50mm) at 200 DPI.

Macpherson

Black and White Scanning

Macpherson
Color Scanning

Final scan around 2 inches height for the n letter.



- 2 Using the magic wand vectorize one or two significant letters of the word.



- 3 Using the selection tool, select a vectorized letter and ask to the software to find one or several fonts which match the selected letter.